

1500 Series Roll Off Hoist

Maintenance Manual



SECTION 3: MAINTENANCE

(Minimum Recommendations)

Inspections and Schedules

G & H Manufacturing has developed two inspection forms which indicate the items to be inspected and the frequency of the inspections. It is important for the life of the unit and for warranty purposes that both forms be used as indicated. The forms are as follows:

- Q1021 – Daily Driver Vehicle Inspection Report – CCR
- Q1024 – Preventative Maintenance Inspection Form – 150 HR, 1200 HR, and 2400 HR

A copy of both inspections is included with this manual.

Torque Specifications for Fittings (Ft.-Lbs.)(Min. – Max.)

SIZE	37° JIC	FLAT FACE “O” RING
1/4”	10-11	10-12
3/8”	17-19	18-20
1/2”	34-38	32-40
3/4”	70-78	65-80
1”	94-104	92-105
1 1/4”	124-138	125-140
1 1/2”	156-173	150-180

Pressure Settings – Main Hydraulic Control Valve

- 1500 Hoist @ **1900 PSI** @ 1500 RPM – 50,000 LB Capacity
- 1500 Hoist @ **2100 PSI** @ 1500 RPM – 60,000 LB Capacity
- 1560 Hoist @ **1900 PSI** @ 1500 RPM – 60,000 LB Capacity
- 1560 Hoist @ **2100 PSI** @ 1500 RPM – 75,000 LB Capacity
- 1580 Hoist @ **1900 PSI** @ 1500 RPM – 80,000 LB Capacity

Grease Points

Apply Grease at the points shown in Figure 11 at the frequencies recommended in the Inspection Schedules. Recommended Grease: Heavy Duty EP Grease NLGI2.

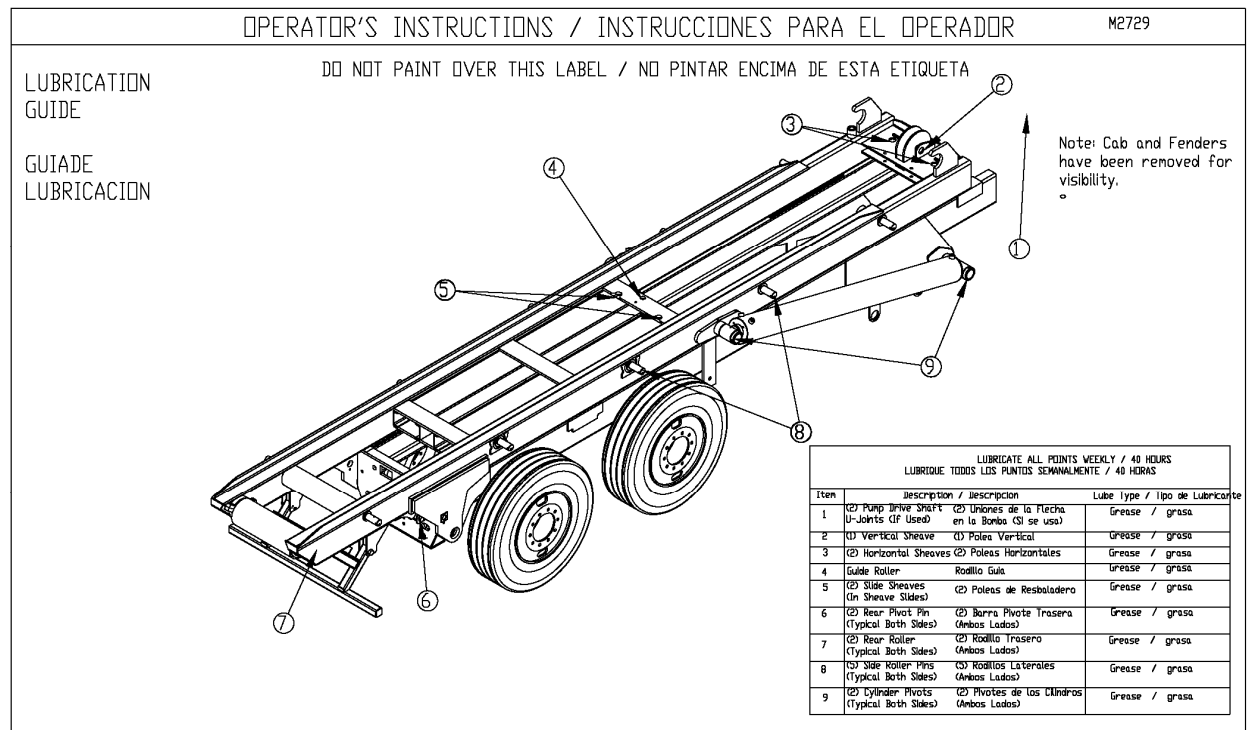


Figure 12

Hydraulic Oil

- Recommend ISO Grade 46
- Maintain Hydraulic Oil Cleanliness Level of ISO 18/15/13

Quick Change Rear Roller Removal/Installation

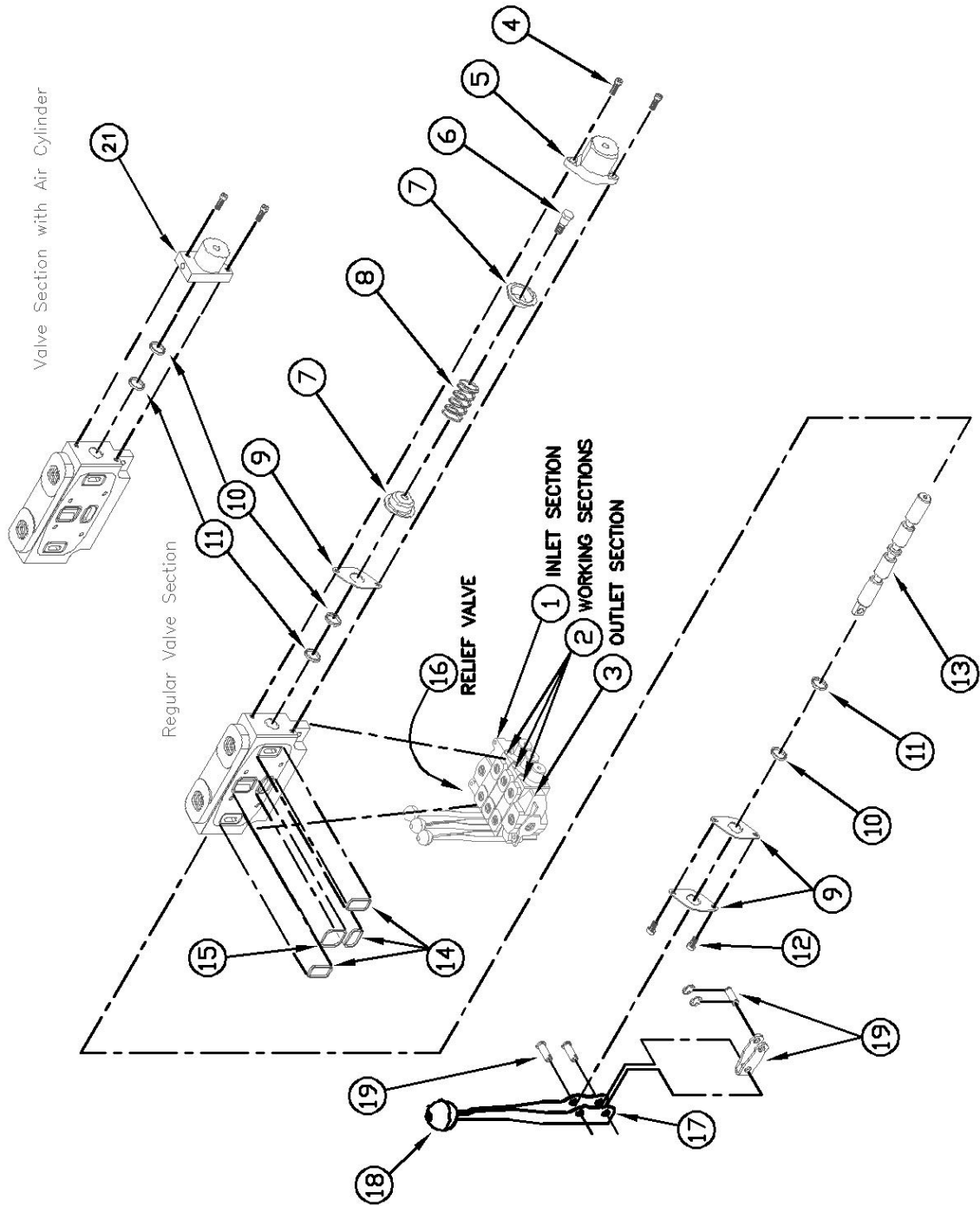
Note: Roller is heavy and must be properly supported during removal and installation.

- Prior to 11/05 – (Ref. attached Drawing A5436) Remove two ¾” bolts from bottom section of clamps on both sides. Roller and clamps will slide down for removal. Reverse for installation.
- After 11/05 – (Ref. attached Drawing A6489) Remove two 3/8” Flat Head Screws from left/drivers side. Slide shaft out right/passenger side. If necessary, a 3/8”-16 bolt can be installed in right side threaded hole of the shaft to help pull the shaft out. Reverse for installation.

Cable Replacement

- Reference attached file titled “Cable Replacement 1500”

Main Hydraulic Control Valve - A20



The Control Valve Assembly for A20 Valve consists of the following parts:

Item #	Part #	Description	Qty
1	H2769	Valve Inlet Section	1
2	H4003	Valve Working Section (Standard)	3
2A	H3927	Valve Working Section With Air Cylinder	1
2B	H3943	Valve Working Section Single Acting	1
3	H4284	Valve Outlet Section Standard	1
3A	H3925	Valve Outlet Section With Power Beyond	1
Valve Working Section			
4	H1920	Screw Cap (A20 Valve)	2
5	H2488	Cap (A20 Valve)	1
6	H2232	Stripper Bolt	1
7	H2480	Spring Guide	2
8	H2476	Centering Spring	1
9	H2489	Retainer Plate	3
10	H2758	Ring Back Up	2
11	H2759	Spool Seal	2
12	H2760	Screw Retainer	2
13		Reference Spool	
14	H2771	Seal Valve	3
15	H2772	Seal Valve	1
16	H2496	Relief Valve Cartridge Assembly	1
17	H2233	Handle 8 in. Old Style With Linkage	1
18	M1233	Knob Ball	1
19	H2231	Linkage	1
20	H2490	Section Seal Kit	1
20A	H2491	Section & Spool Seal Kit (Square seals, Spool seals, Backup Rings)	1
21	P1337	Air Cylinder	1